



Aayush Singh

Cedar Home

\$50.00 Drawing Winner

“Aayush is a strong DSP on the Cedar team, consistently filling gaps where needed, assessing situations as they arise, developing solutions, and jumping in wherever he can to ensure residents are well cared for and his coworkers are supported.”

Nominated by: Lisa Grissom, Senior Director of Residential Services

“Aayush won a challenge this month without even knowing he was part of it. During some spring cleaning, it was noticed that the vacuum cleaner needed to be dusted. That led to a discussion about whether cleaning a vacuum cleaner was really necessary, with the conclusion being that it was—after all, no one wants to track more dirt into an already dirty space while trying to clean it. So, a contest was created: the first staff person to notice the vacuum needed cleaning and take the initiative to clean it, without any prompting, would win. That same day, Aayush cleaned the vacuum in line with the requirements of the contest! This is the kind of initiative and care he brings to every aspect of his work. He can be relied on to work through complex care needs while also helping keep the program feeling like a home. Thank you Aayush!”

Nominated by: Terrance Thompson, Cedar Program Manager



DeDe Lofthouse

Administration

“DeDe is incredibly helpful and a true team player. She is always willing to step in, assist others, and help Star of Hope be better in every way she can. Her genuine care for the people we serve is evident in all she does, and she consistently supports the entire Star of Hope team with the understanding that her efforts help the individuals we support live better lives. DeDe is a rock star, and her dedication makes a real difference every day.”

Nominated by: Danny Stoddard, Director of Operations

Mary Brewer

Curry DSA



"Mary is a steady and dependable presence who we can always count on to do what is needed for the clients we support. She consistently keeps their needs at the center of her work. Her big heart, compassion, and commitment make a meaningful difference to our team. Mary also brings a great sense of humor and keeps us laughing, which lifts the entire workplace. Rain or shine, she shows up and works hard. Mary truly represents the kind of difference we want to see in this world."

Nominated by: Shannon Collard, Curry CBS Program Manager

Arriana Rodriguez

Curry DSA



"Although Arriana is new to Star of Hope, she has already shown tremendous dedication in a short amount of time. She is patient and kind with both clients and staff, and she makes a difference by being fully present, encouraging, and engaged. She is always thinking of fun activities that motivate people to get involved and enjoy meaningful experiences. Her openness to learning and growing has been especially impressive, and she is already making a positive impact. She will be a great part of the Star of Hope team for many years to come!"

Nominated by: Shannon Collard, Curry CBS Program Manager

Painter Mac-Gorrindo

Forest View Home



"Painter consistently goes above and beyond to keep things running smoothly at the house. His dedication to making sure the home remains safe, functional, and operational does not go unnoticed. He steps up where needed, takes pride in the work, and makes an important difference through his reliability and commitment to our residents."

Rosa Gutierrez-Camacho

Coos DSA



"I want to recognize Rosa for being such a positive and effective team leader. She has an incredible ability to lead a fun, engaging program while also including the whole company in the celebrations she plans. Rosa brings energy, connection, and enthusiasm to the team. Her efforts help create a stronger sense of community across the organization. She does an amazing job and her impact is felt by both staff and clients."

Diane Johnson

Director of Community Based Services



"Diane Johnson shows up every day with genuine care for both our residents and our staff. Her support and advocacy for the people we serve are truly unmatched, and she leads with compassion, heart, and consistency. Diane brings strength, warmth, and steady leadership to Star of Hope. We are deeply grateful for the difference she makes each day."

CeAndra Nelson

On-Call Direct Support Professional



"CeAndra has already made a strong impact in the short time she has been with us. She has fully embraced her role and brings a calm, supportive demeanor that our clients truly enjoy. Her presence helps create a positive environment, and she has quickly become a valued part of the team. We are fortunate to have her with us."

Tina Collard

Brook Home



"Tina is bright, cheerful, and always brings smiles with her. She is a hard worker, a quick learner, and someone who follows direction well. Tina interacts positively with the residents, and they clearly enjoy her presence. Her positive attitude and dedication make her an important part of the team."

Nominated by: Greg John, Brook Home Program Manager

Jessica Dean

Edgewood Home



"Jessica consistently goes above and beyond for both residents and staff. She helps the graveyard shift with the morning routine and is always looking for ways to create fun and meaningful outings for the ladies. She even puts together personalized music playlists for each resident, which shows her thoughtfulness and attention to individual needs. Jessica is also someone people can turn to when concerns come up and she does her best to listen and help find solutions. Her dedication and care make a lasting difference."



Kelsie Dewater

Administration

"Kelsie consistently demonstrates exceptional service in her role, ensuring that payroll and HR issues are handled efficiently and effectively. Her poise and grace under pressure allow her to navigate complex issues with ease, providing timely solutions to sensitive and time-sensitive matters."



Greg John

Brook Home

"Greg is a dedicated and compassionate leader who consistently goes above and beyond to ensure the clients at Brook are living their best lives. He takes time to understand each client's unique needs and goals, providing personalized support and encouragement to help them succeed. Greg also brings structure and stability to the team, keeping staff informed and supported so they can provide excellent care. His commitment to both clients and staff is clear in everything he does."

Nominated by: Justin Taylor, Director of Curry County Programs

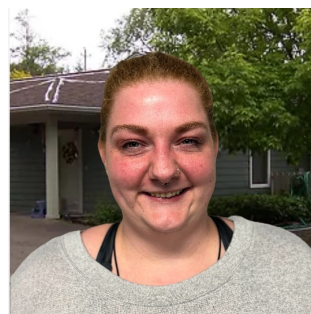


Chris Stevens

Brook Home

"Chris is a dependable team member who helps ensure residents are safe through the night and begin each day with quality care and positive interactions. The early morning hours are critical to setting residents up for a successful day, and Chris plays an important role in making that happen. His consistency, care, and reliability make a meaningful difference in the lives of the residents we support."

Nominated by: Greg John, Brook Home Program Manager



Kaleah Melendy

Compass Circle Home

"Kaleah has been a wonderful asset to the Compass Group Home. She is consistently cheerful when interacting with residents, and her positive attitude helps create a warm and welcoming environment. Kaleah's kindness and presence make a meaningful difference to the people we support."

Nominated by: Jennie Rosson, Compass Circle Home Program Manager



Shannon Collard

Curry CBS

"Shannon has brought structure, creativity, and positive energy to the Curry DSA program. She creates thoughtful, engaging activities that reflect the interests and needs of participants while fostering a strong sense of community and belonging. Her calm leadership and steady support have made the program more vibrant, welcoming, and enjoyable for both clients and staff."

Nominated by: Justin Taylor, Director of Curry County Programs



Ronald Spotts

On-Call Direct Support Professional

"Ron has been stepping into the DSA program and has been a tremendous help with coverage. He asks thoughtful questions to make sure he is doing the job accurately, which shows both care and professionalism. Ron brings a positive attitude and a genuine willingness to help wherever needed, and that support is greatly appreciated."

Nominated by: Rosa Gutierrez-Camacho, Coos DSA Program Manager



Kathy Pozun

Maxwell Home

"Kathy is doing a fantastic job in her new role as Program Manager. She is knowledgeable, helpful, and a strong support to both clients and staff. Kathy communicates clearly and directly, while also being wonderful with the clients we serve. Her leadership, professionalism, and dedication are already making a strong positive impact."



Danny Stoddard

Director of Operations

"I want to recognize Danny Stoddard for his support and dedication while I was out tending to family matters. He stepped in and did an amazing job keeping payroll running smoothly. I'm truly grateful I had the time to be away without having to worry."

Nominated by: Kelsie Dewater, Human Resources Coordinator

"Being a strong Team Player and holding down the fort while key personnel were out. We appreciate his dedication to Star of Hope!"

Nominated by: Jennie Rosson, Compass Circle Home Program Manager